

Blair Watson

STEM Programme Coordinator UHI

#ChooseToChallenge
Empowerment, Action, Strength





STEM Team

#Choosetochallenge: Empowerment, Action, Strength



AIMING FOR AWESOME

1918



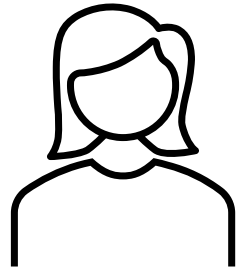
University of the
Highlands and Islands
Oilthigh na Gàidhealtachd
agus nan Eilean



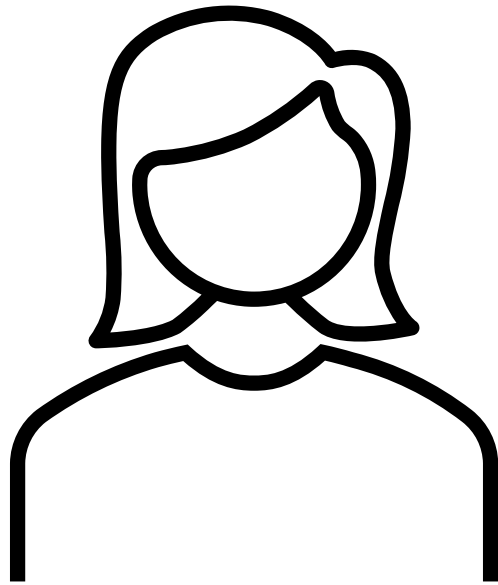
**ROYAL
AIR FORCE**
Youth & STEM



The COVID Problem



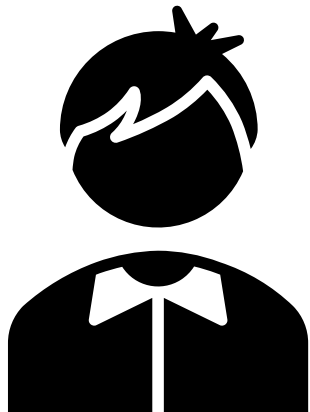
12% of engineering
sector



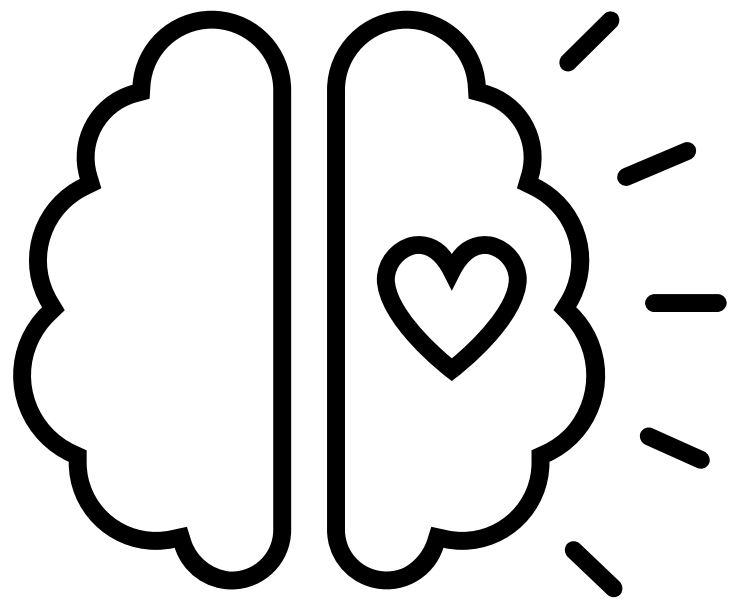
47% of UK's overall
workforce



Economic Benefits



Moral Obligation

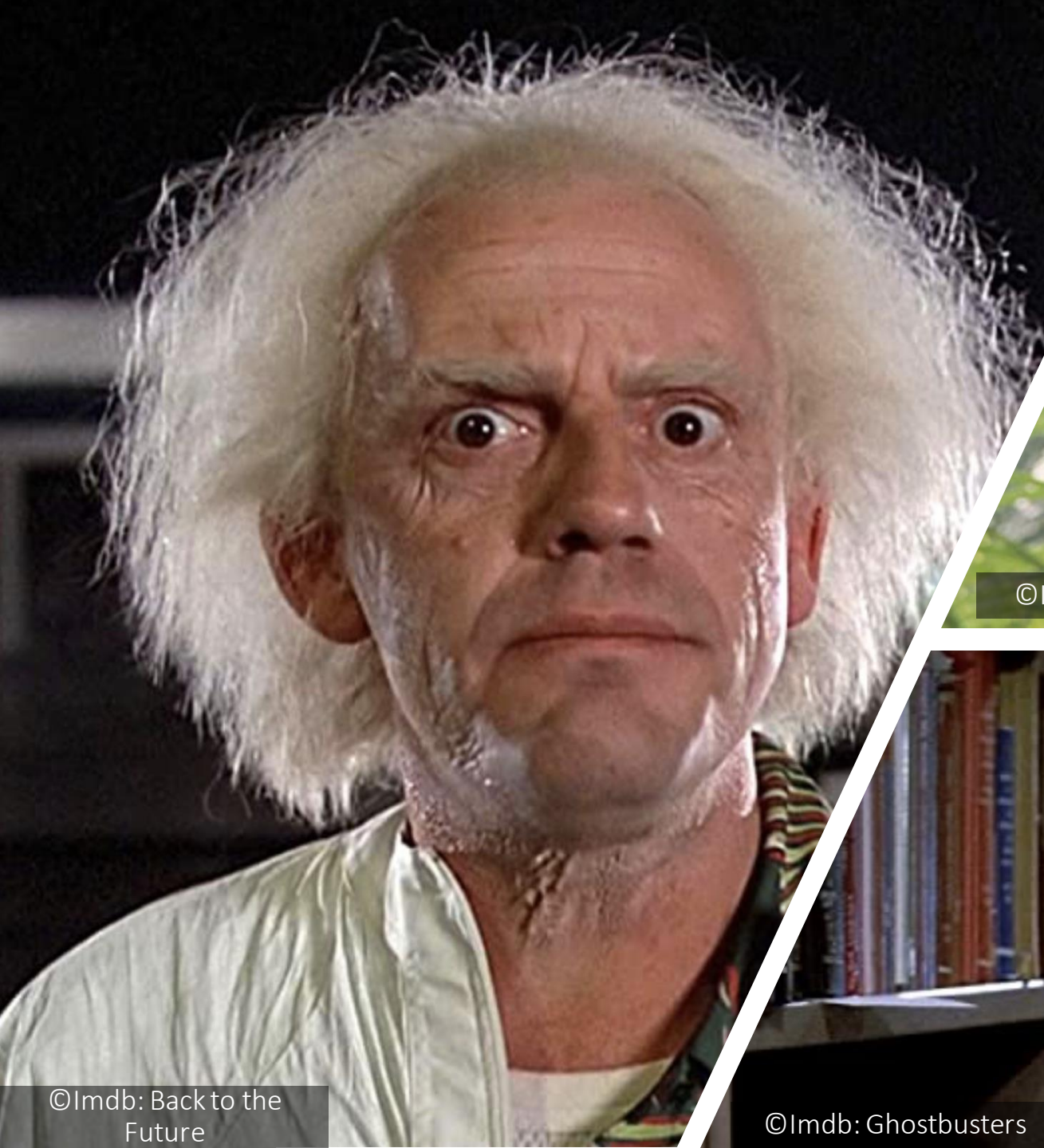


Losing Talent

School

Undergrad/Postgrad

Professional



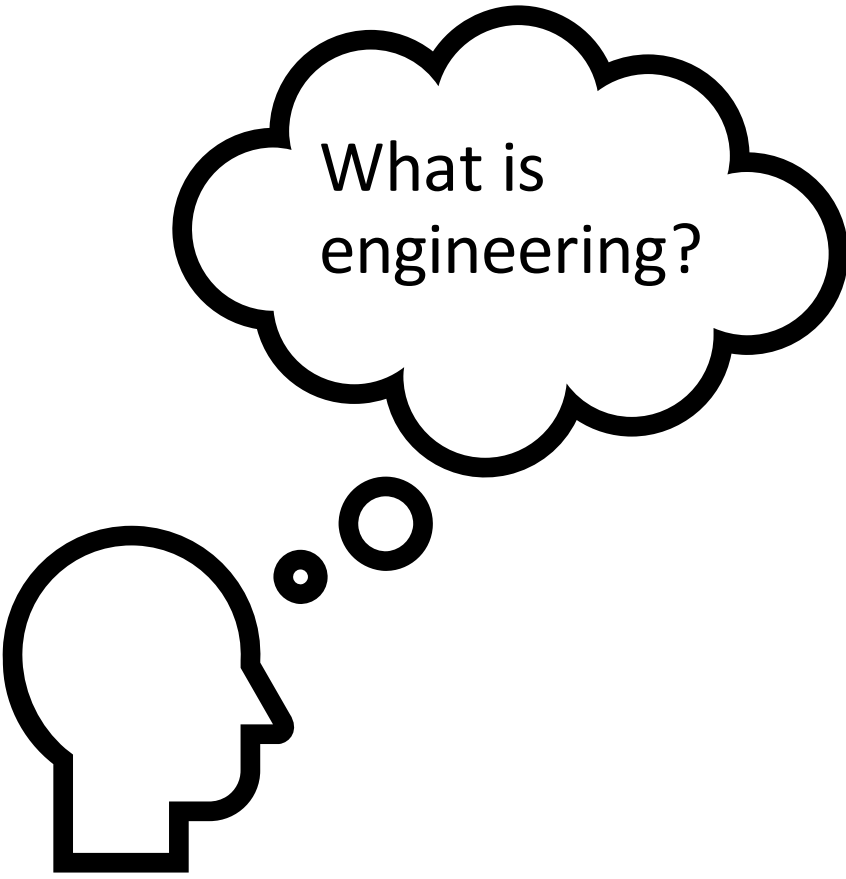

©Imdb: Back to the Future



©Imdb: Jurassic park



©Imdb: Ghostbusters



What is
engineering?

Being Valued



Making A
Difference



Being Creative



▼ Interview with a real engineer!

▲ Lift

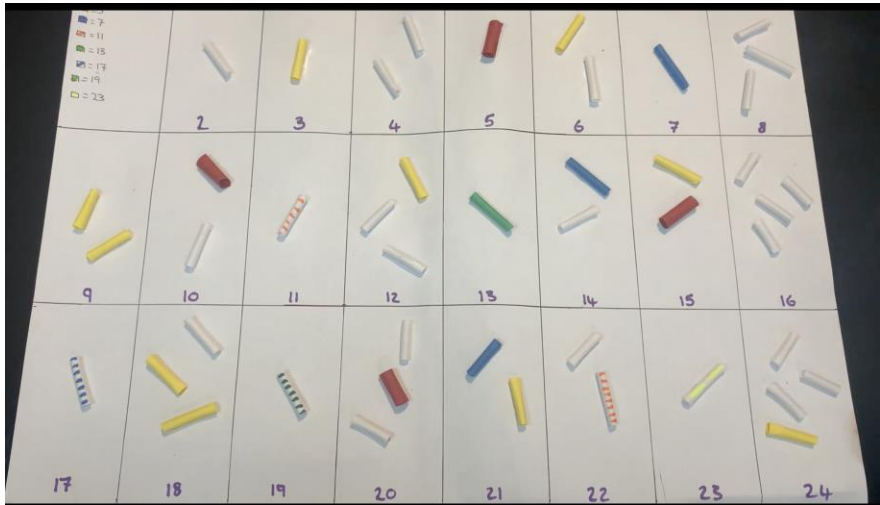
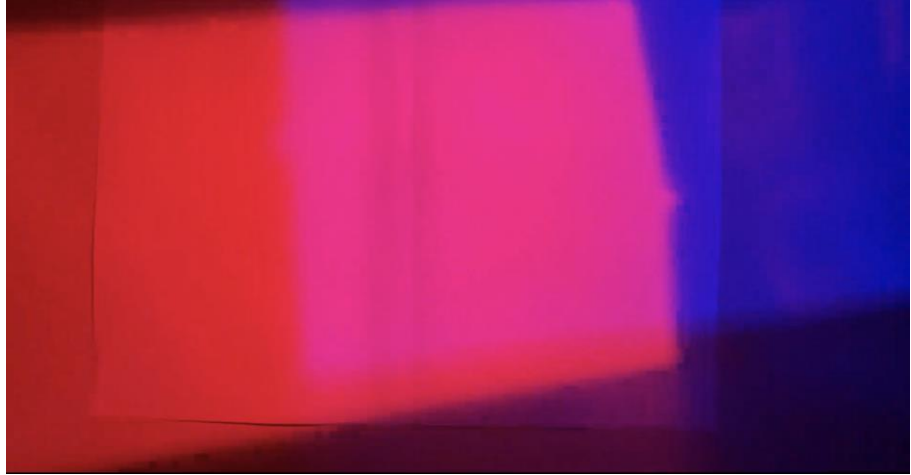
In this video we explore the force of lift: the force that allows our aircraft to take flight! Discover the importance of wings, why a plane's speed matters, and investigate the force with a mind blowing experiment...

You will need :

- Paper
- Cup of Water
- Straw
- Scissors
- Sellotape



▼ Weight



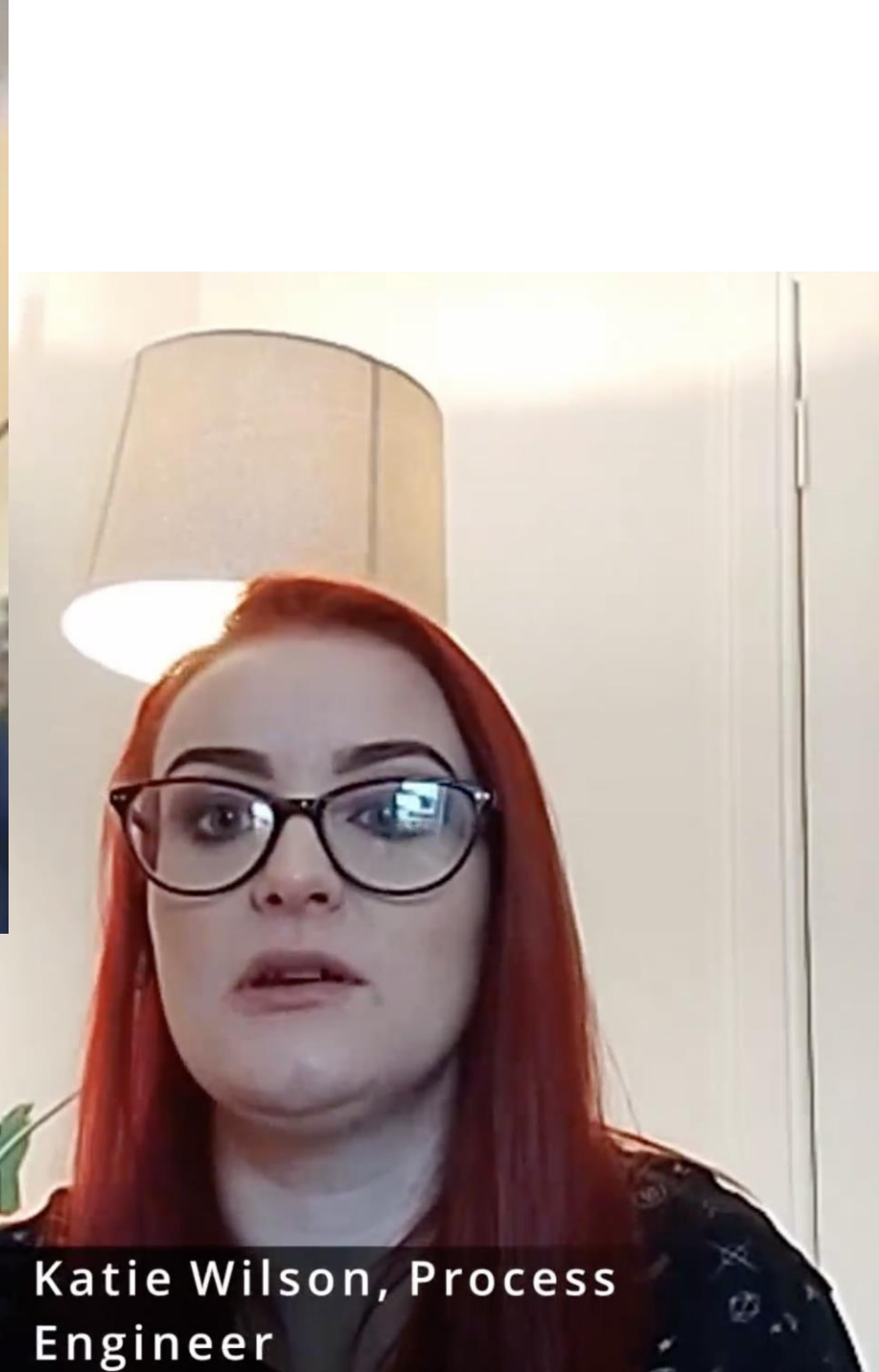
Science, Technology, Engineering, Art, Maths
(STEAM)





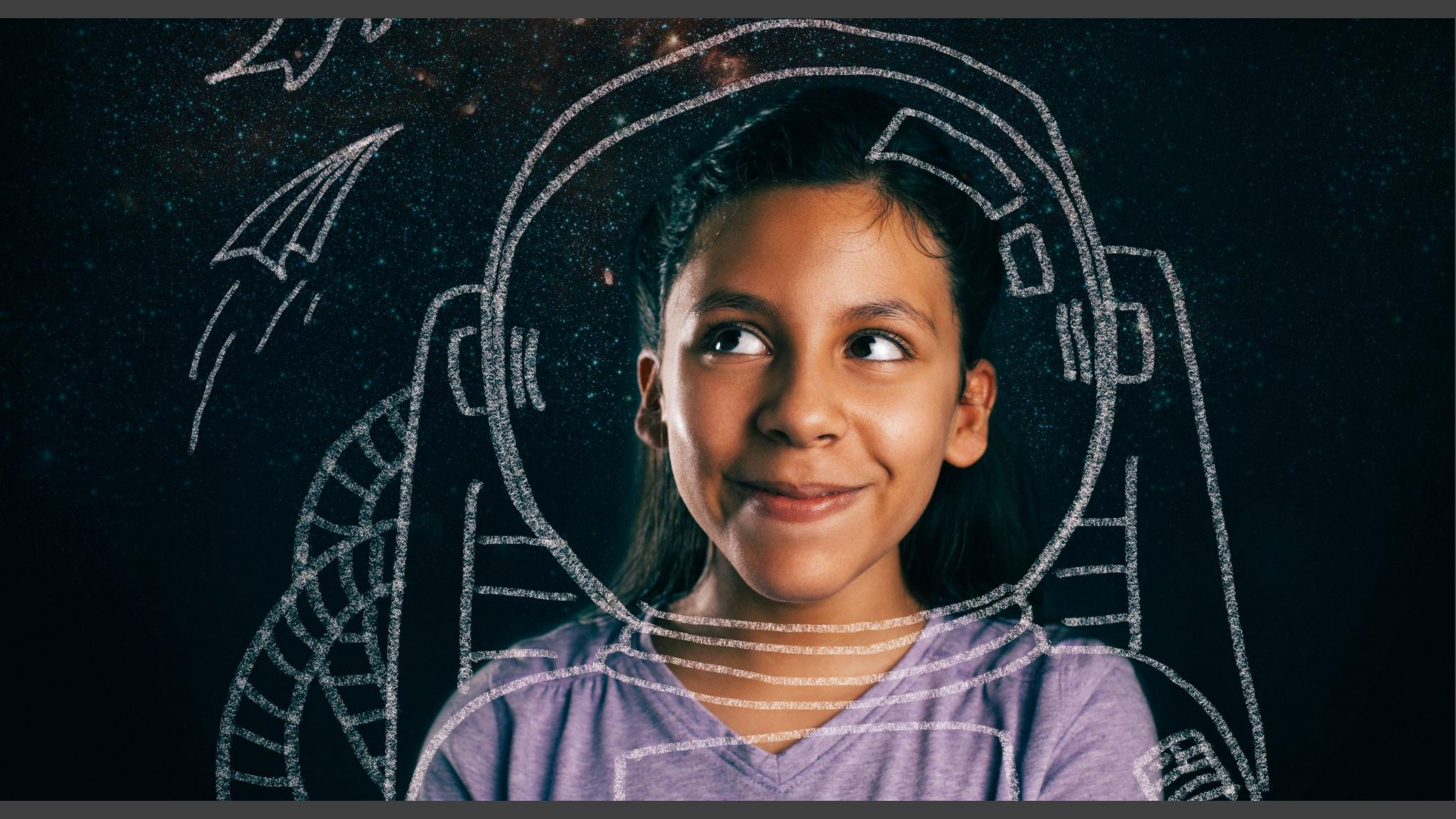


Morag Cooper, PhD Student



Katie Wilson, Process Engineer







**Introducing
Forces**



**Introducing
Communications**



**Introducing
Cyber Security**



**Introducing
Rocket Building**





©BeyondCurie.com

SONIFICATION OF STARS

WANDA DIAZ MERCED



© The Scotsman

Margaret Beedie, teacher and Bletchley Park veteran . Picture: Contributor



© NASA: Dorothy Vaughn



© University of Michigan

Elizabeth (Elsie) MacGill during her Canadian Car and Foundry (CanCar) years



© NASA: Mary Jackson

Mary Jackson was one of the "human computers" portrayed in the film "Hidden Figures." (Image credit: NASA)



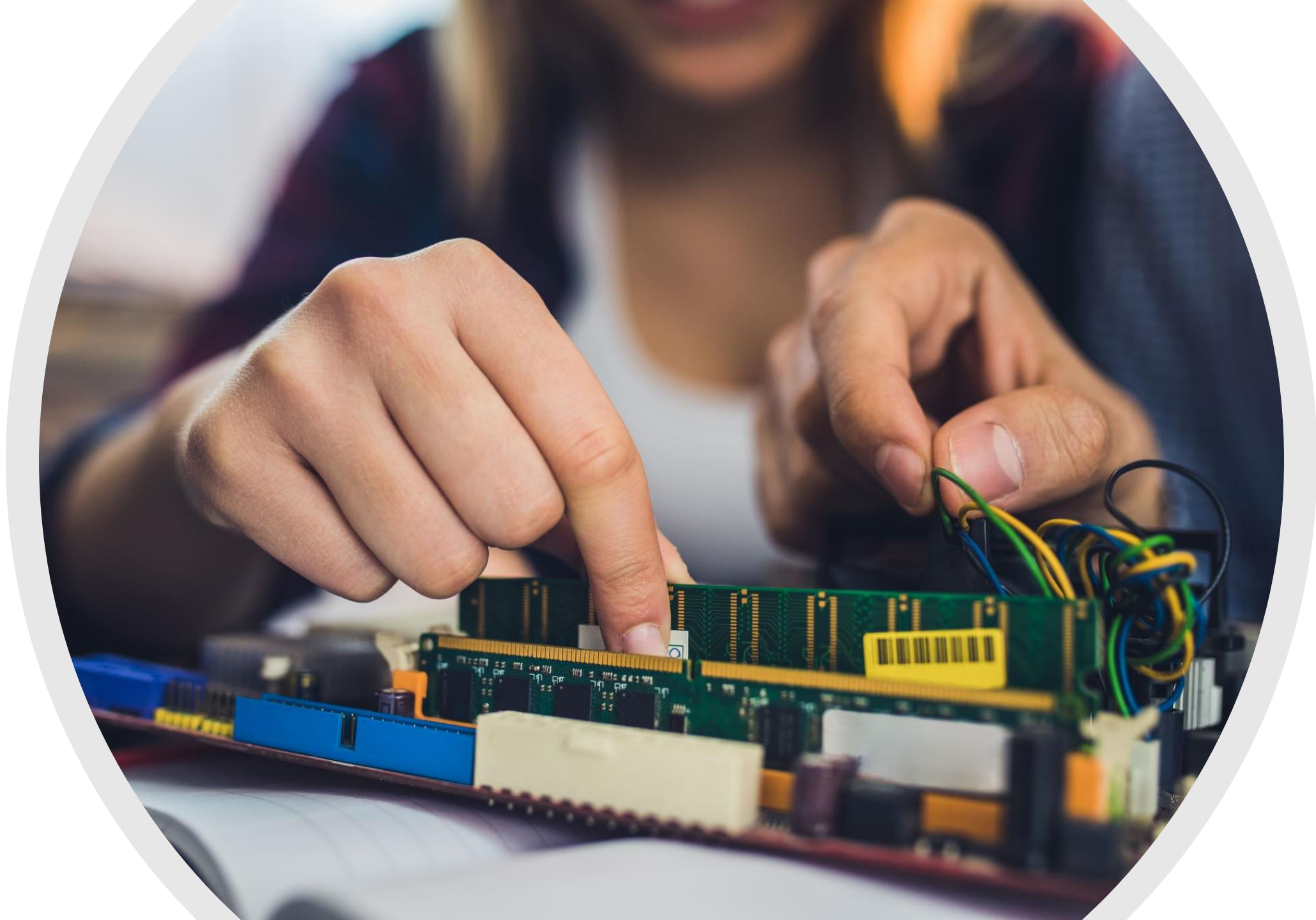
© NASA: Katherine Johnson



QUEEN OF THE HURRICANES

ELSIE MACGILL

HOW A WOMAN CONQUERED TERRIBLE HANDICAPS AND BECAME CHIEF ENGINEER OF CANADA'S GREAT HURRICANE FIGHTER PLANE FACTORY.



FEEDBACK

